

This is London®

68 YEARS INFORMING INTERNATIONAL
& UK VISITORS TO LONDON

EST.1956 ISSUE 3336
FEBRUARY, 2024



STANDING AT THE SKY'S EDGE

Music and Lyrics by **RICHARD HAWLEY** Book by **CHRIS BUSH** Directed by **ROBERT HASTIE**

GILLIAN LYNNE THEATRE | SKYSEDGEMUSICAL.COM

National
Theatre

SHEFFIELD
THEATRES

VARIOUS



VALENTINE'S NIGHT AT FAULTY TOWERS THE DINING EXPERIENCE

Artistic Director Alison Pollard-Mansergh, Producer Jared Harford, and the whole team at Interactive Theatre International, who are behind the critically acclaimed international immersive dining phenomenon, Faulty Towers The Dining Experience, are holding a special Valentine's Day Deluxe Night on 14 February at the President Hotel, the show's West End home, in addition to the regular six shows a week.

Mingle with the upper echelons of society this Valentine's Day as Basil, Sybil, and Manuel host an evening of fine dining and romance, woven seamlessly into their signature chaos! Enter into a world of deluxe indulgence, sophistication, and delectable cuisine where the unexpected becomes extraordinary during two hours and three courses of pure romance and mayhem. This isn't just another night out – it's a deluxe experience where the BBC's iconic characters take centre stage, ensuring every moment is filled with elegance and charm... what could possibly go wrong?!

Producer Jared Harford said: 'We are over the moon to be announcing our first special Deluxe Night on Valentine's Day – this will be the first of a series

we've got planned for the future of the show. And I'm quite sure that guests will benefit from being in the presence of Basil and Sybil's special brand of romance...'

When the audience become diners in the 'Faulty Towers' restaurant, pretty much anything can happen, because 70% of the show is improvised. The fun starts as guests wait to be seated. It then hurtles along in a 2-hour tour de force of gags and shambolic service as Basil, Sybil and Manuel serve a '70s-style three course meal together with a good dollop of mayhem. Expect the unexpected!

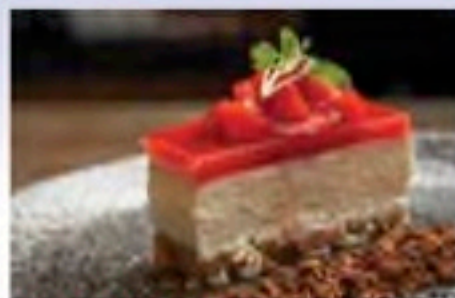
Devised by Alison Pollard-Mansergh, Andrew Foreman and others, the show has been touring the UK and internationally since 2008, having appeared in 43 countries to date. The show has toured to over 1000 venues, with approximately 400 shows per year on average across the UK. A loving tribute to the BBC's classic TV series, it has been seen by over a million people worldwide since the very first show at the Ridges Hotel in Brisbane on 24 April 1997.

Faulty Towers the Dining Experience is now the longest running immersive production in the West End, the longest running show based on a TV series in the West End and also the longest-running Faulty Towers production of any kind running worldwide.

Demand for tickets continues to grow both for the West End production at the President Hotel in Bloomsbury – a recent extension means there is now availability for the six shows a week until December 2024.

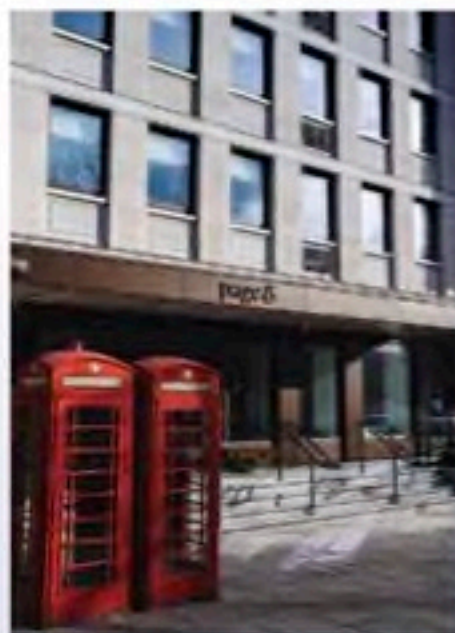
Faulty Towers The Dining Experience is a loving tribute to Faulty Towers, the BBC TV series written by John Cleese and Connie Booth. Their TV scripts are not used in Faulty Towers The Dining Experience which uses its own original scripts and format.

Tickets for the Valentine's Day Deluxe and all other performances on sale at www.faultytowersdining.com

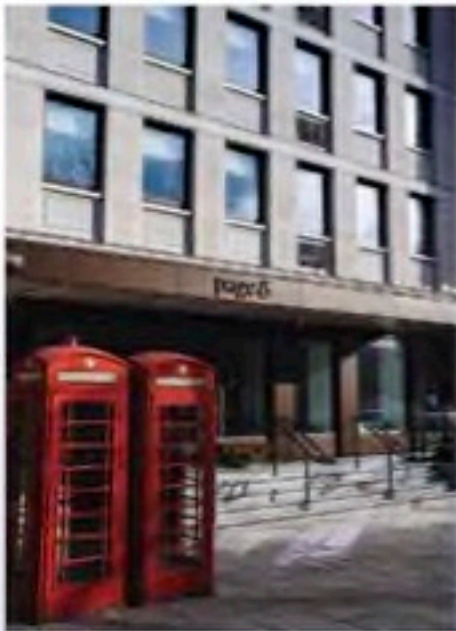


THE SEASON OF LOVE

Close to the big skies and grassy swards of Hyde Park, the Japanese-style hotel The Prince Akatoki is offering a special Valentine's menu where guests can enjoy a glass of Champagne and an exclusive Valentine's Day feast. Jersey rock oysters come with Japanese dressing, and Oscietra caviar; asparagus is accompanied by crispy quail eggs and lobster croquettes. To follow, perhaps steamed halibut or Dedham Vale 28-day aged beef fillet followed by a chocolate and passion fruit delice or mini apple-cinnamon doughnuts.



Meanwhile, located in the beating heart of London, in Trafalgar Square, just opposite the renowned National Portrait Gallery, Page8 is the perfect location for a romantic escape without leaving the big city. This year the hotel offers guests a Valentine's Day package, which includes a wellness session from Ruby Treatment, ensuring guests can celebrate the season of love in style. Couples will also wake up to a delightful breakfast spread with an extra touch of sparkle – a complimentary bottle of champagne.



Meanwhile, located in the beating heart of London, in Trafalgar Square, just opposite the renowned National Portrait Gallery, Page8 is the perfect location for a romantic escape without leaving the big city. This year the hotel offers guests a Valentine's Day package, which includes a wellness session from Ruby Treatment, ensuring guests can celebrate the season of love in style. Couples will also wake up to a delightful breakfast spread with an extra touch of sparkle – a complimentary bottle of champagne.