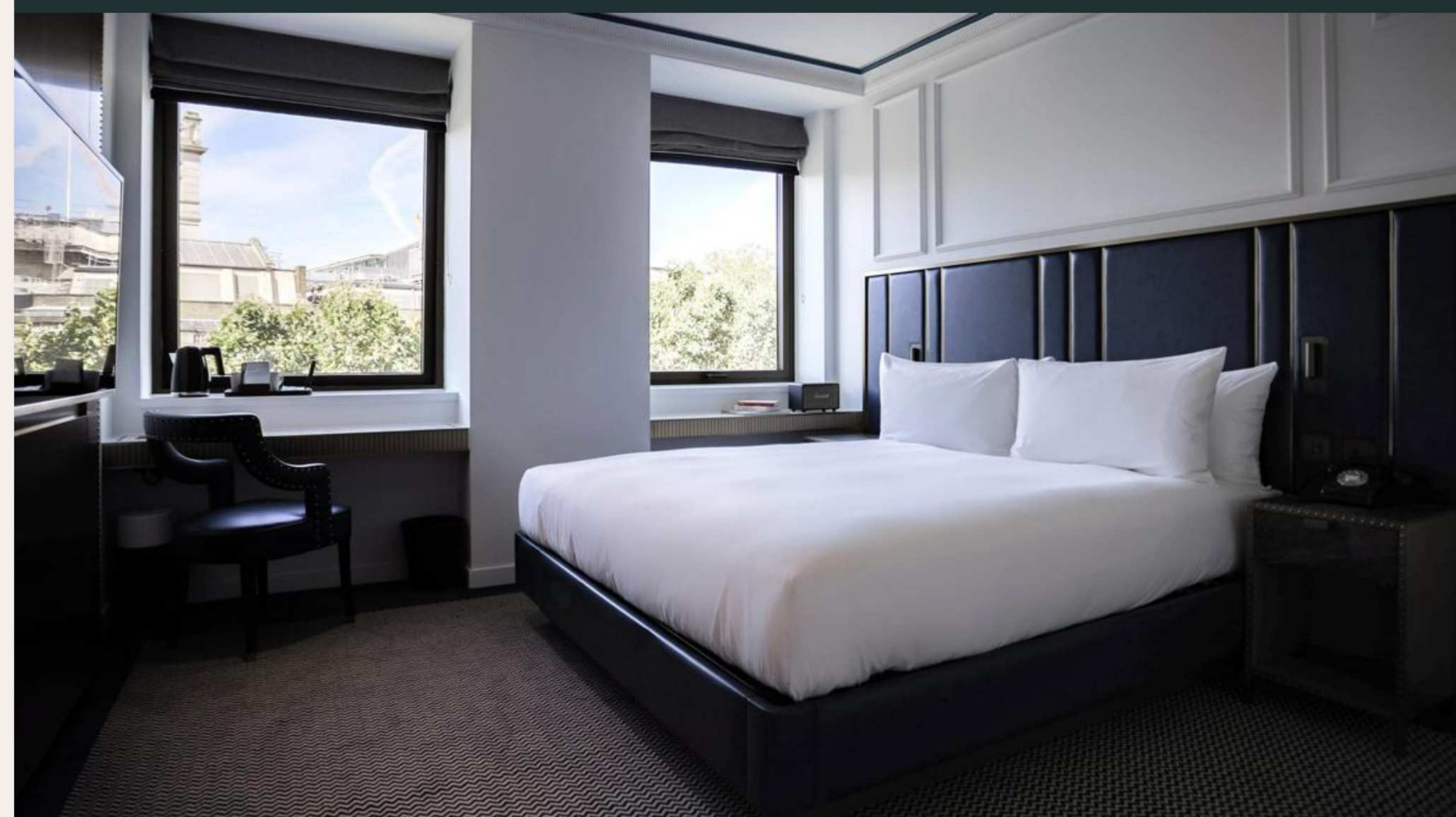


Page 8, Leicester Square hotel review

Generous rooms and a cool cafe opposite the National Portrait Gallery make this a draw



Jenny Coad | Friday October 09 2020, 5.00pm, The Sunday Times

Page8 on St Martin's Place has artistic neighbours — the National Portrait and National galleries are across the road. The rooms peer over their rooftops, up Chandos Place and St Martin's Lane to the Coliseum theatre. It's a brilliant location at the heart of London, with Trafalgar Square, Covent Garden and Theatreland all on your doorstep.

With its easygoing café reception, you can see why locals might pop in for a specialist drip coffee and a wander around the world thanks to the multicoloured *Wallpaper** guides. The idea is to share your own travel tips — it has even produced a magazine with routes to follow from the hotel.



STAYCATIONS

Best Places to Stay 2020

From great new openings to swish spas and cosy pubs with rooms, find your ideal hotel stay with our ultimate guide

[Find out more](#)

The 138 rooms are all large; even the entry-level room is spacious and the corner deluxes are extra big. Door-knocker lions reference Edward Landseer's sculptures in Trafalgar Square and rooms are all decorated in the same sleek palette, with navy leather headboards with dirty-gold studded trimmings. Fashionably matt fixtures in the bathrooms are the same metallic shade and tiles are white marble-effect. In an eco nod, amenities are bamboo-wrapped and toiletries, by CO Bigelow, are refillable. Proper mugs mean you can have a satisfying brew in the morning; it has its own blend of Good and Proper Tea. Surprisingly, provided you close the windows (each room has an air purifier), you won't hear the traffic or rabble outside. There's no noise from neighbouring rooms either.

You can have a breakfast bap (bread from Paul Rhodes Bakery) or its signature tiramisu on pleasingly chunky ceramic plates in the ultra-friendly Page Common (the café). For now you'll have to go out for dinner; try Persian [Nutshell](#) up the road. A Japanese restaurant, Bisushima, is set to open on the fifth floor in November, with a side serving of capital views.

Double rooms from £170 room-only; breakfast from £2;
pagehotels.com



GUCCI

[shop gucci.com](http://shop.gucci.com)

ABOUT THIS HOTEL

- 8 St Martin's Place, London WC2N 4JH
- **Restaurant** Opening soon
- **Dogs allowed** No
- **Accessible** Yes

For the latest on Covid-related measures and restrictions, please check directly with the hotel

[For the best deals, follow this link](#)

Best Places to Stay: 80 top British hotels

Find your perfect place to get away with our interactive guide. Browse by region, price and type of hotel at thetimes.co.uk/bestplacestostay